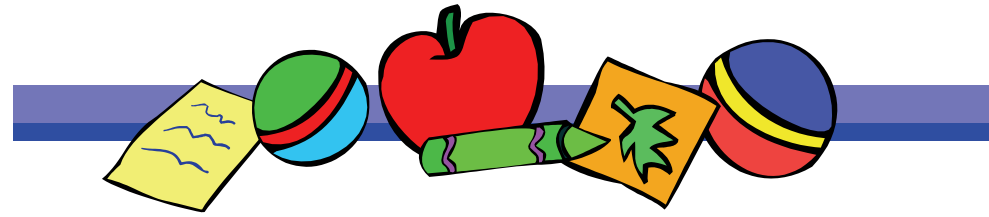


PHILOSOPHY

We believe that all children can and will learn. The staff has carefully chosen a developmentally appropriate curriculum focusing on the needs of the children. Our goal is to help children ranging from ages two to five years, develop a positive self-image and reach their maximum potential. This will ensure that our children become self-motivated, self-regulated, and self-directed learners

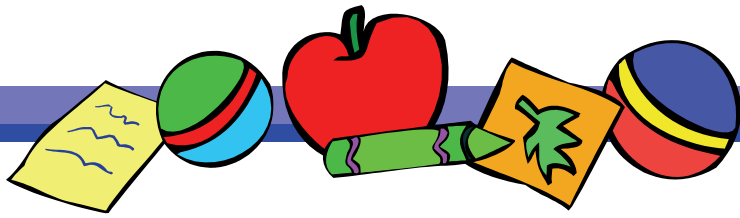


Hilltop Child Care Center

Rules & Regulations

1273 West 30th Street
Riviera Beach, FL 33404
(561) 844-3216





CENTER HOURS

Monday—Friday
6:30 AM- 5:30 PM

Any child pickup up after 5:30 PM, will be charged \$5.00 for the first 5 minutes, and \$1.00 per minute thereafter. Payment must be paid before your child can return to school

ATTENDANCE

We will not accept any child after 9:15 AM, as it interferes with their instruction time
(Exceptions only in cases of emergency)

SIGN IN/OUT

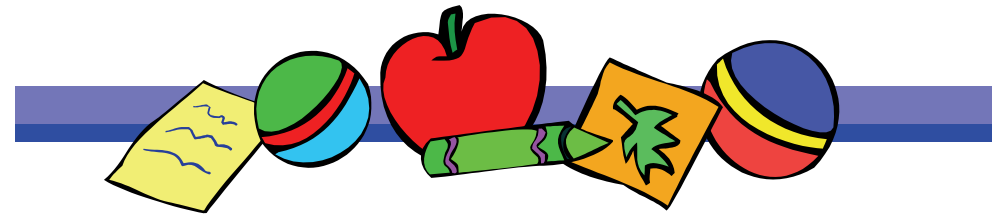
Parents are required to accompany their child(ren) inside when arriving at school **Parents must sign their child(ren) in/out daily (HRS Requirements), to ensure the safety of the children.

BREAKFAST

The center does not provide or prepare breakfast/lunch. Parents are responsible for providing these meals. Breakfast is served from 6:30 AM -8:30 AM. No breakfast will be served after 8:30AM

PAYMENTS

All fees are due Mondays. They must be placed in the drop box. No payments will be received in hand. There is a \$25.00 return check fee, on all checks returned for any reason.



ABSENCES

Parents are required to call if their child is absent. This is ensure your child's safety.

GUM AND CANDY & TOYS

No gum, candy, and toys from home are allowed

EMERGENCY CLOSINGS

If there is a Natural Disaster and the Palm Beach County School District should close, the center will also close

HOLIDAYS

New Year's Eve & New Year's Day
Martin Luther King's Birthday
Good Friday
Memorial Day
Independence Day
Labor Day
Thanksgiving & Friday After
Christmas Eve & Christmas Day

MEDICATIONS

Only medications prescribed by the doctor and in its' original container will be administered in the center. Parents must sign a medication form.
State of FL Rules Chapter 59-1698